



COMBIFORM™

SCREED RAIL SYSTEM



COMBIFORM™

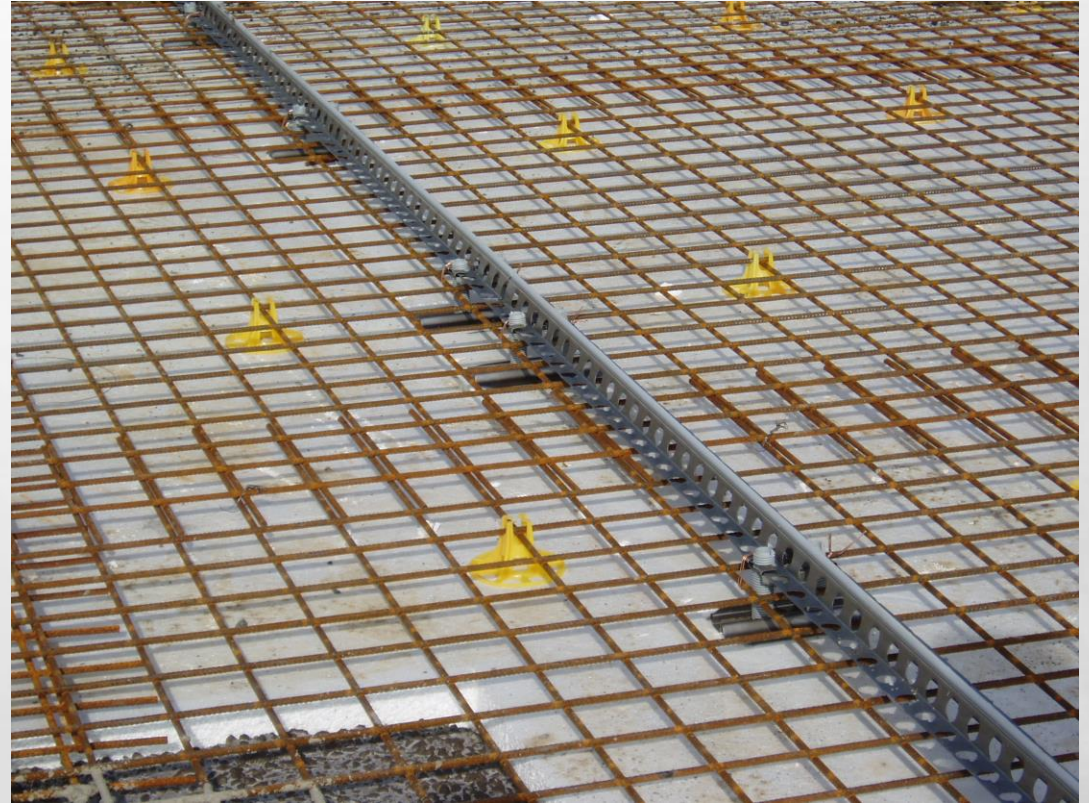
THE SYSTEM

- LEAVE IN PLACE SCREED RAIL SYSTEM
- SUPERIOR FLATNESS OF THE FLOOR COMPARED TO OTHER METHODS
- REDUCE THE GRINDING TIME AND NO FLOORSAWING NEEDED
- EASY TO GET REQUIRED SLOPES
- SAVES TIME AND LABOR = SAVES MONEY



HOW IT WORKS

- ASSEMBLE IN ROWS OR SQUARES
- EASY TO ADJUST TO RIGHT LEVEL
- DOWEL BAR HOLDER



HOW IT WORKS

- WORKS TOGETHER WITH VIBRATION BEAM OR OTHER TYPE OF BEAM
- THE BEAM IS SLIDED ON TOP OF THE ASSEMBLED COMBIFORM
- CAN CAST CONTINUOUSLY DON'T NEED TO WAIT FOR THE BED BESIDE TO DRY



CUSTOMER BENEFITS

- SUPERIOR FLATNESS OF THE FLOOR
- EASY AND QUICK TO ASSEMBLE
- ALLOWS CONTINUOUS CASTING
- LIGHT WEIGHTED – ONE PERSON OPERATION
- LESS DEMANDING WORKING ENVIRONMENT COMPARED TO CONVENTIONAL CAST METHODS

APPLICATIONS

- MOST TYPE OF CONCRETE FLOORS, INDOOR & OUTDOOR
- INDUSTRIAL, HOUSING AND OFFICE BUILDINGS
- REINFORCEMENT FLOOR LAYER IN HIGH BUILDING COMPLEX



CUSTOMER COMMENTS

- IT IS JUST NOT POSSIBLE TO GET A FLATER FLOOR USING ANY OTHER METHOD. COMBIFORM IS SUPERIOR WHEN IT COMES TO END RESULT OF THE FLOOR
- COMBIFORM IS THE QUICKEST, EASIEST TO ASSEMBLE AND MOST RELIABLE SCREED RAIL SYSTEM ON THE MARKET
- THE OVERALL TIME SPENT ON THIS PROJECT COMPARED WITH SIMILAR JOBS USING FORMWORK WAS HALVED
- WHEN WE STARTED TO USE COMBIFORM IT WAS POSSIBLE FOR US TO INCREASE THE AMOUNT OF PROJECT WE MADE WITH 30% ANNUALLY.

CONTACT

- WERLEFORS STEEL AB OWNER OF THE BRAND COMBIFORM
- INFO@COMBIFORM.COM
- WWW.COMBIFORM.COM
- TEL: +4670 232 11 55
- UPPSALA, SWEDEN